

SKILLQUBE

Assembly Manual qubeM

10.9" iPad

Part C

Screws



Part A

Part B

SKILLQUBE

Assembly Manual qubeM

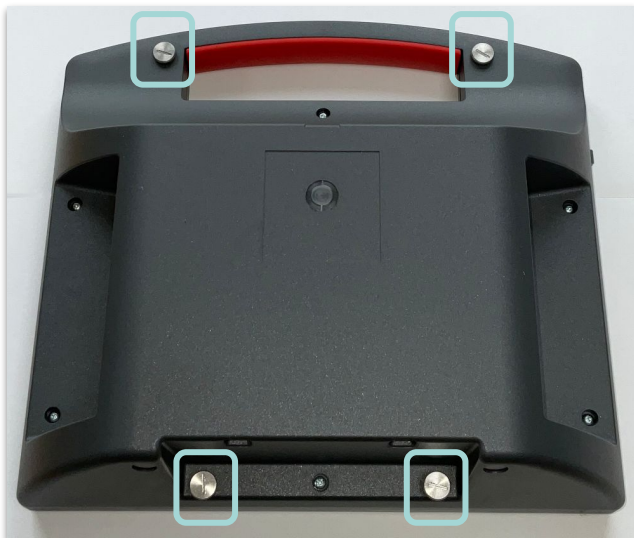
10.9" iPad



Insert your iPad into part A with the charging port facing outward and the on / off switch accessible through the shell's button. Align part C with the center of the upper edge, ensuring that the smaller section is facing upwards.



Place part B on top of part A.



To connect parts A and B, flip the shell over and use the screws provided. No tools are necessary, but a flathead screwdriver can speed up the process.